

DCI *EDGE*



DCI EDGE ORTHO EQUIPMENT

OUR VALUES, OUR STORY

*"Sometimes all it takes
is an idea and a passion
to change the course of
your life and career."*



Jason, Amy & John Spencer

Portland Oregon, 1982

John and Janelle Spencer had a dream to start their own business. They knew that they had the discipline, drive, and passion to create a successful business and give back to their community. What began with a small home loan, an idea for a syringe, and a makeshift office in their living room grew into a global parts giant.

Crafted with Decades of Experience

With the help of their children, Jason and Amy, the Spencer's continue to change the face of dental with continuous innovation, remarkable expansion and a dedication to the highest standards. To this day, they remain true to their core values, making their customers lives easier.

1983

Company Beginnings

DCI is founded by John & Janelle Spencer.

1991

New Delivery System

DCI designs its first world acclaimed dental system.

1993

Global Growth

DCI becomes largest dental parts manufacturer in the world.

1997-2005

Expansion

DCI expands through the acquisition of Pelton & Crane and Marus, building them into the second largest dental company in the US. Companies are sold in 2005.

2016

Introducing DCI Edge

DCI returns to the Equipment market with the introduction of the new Series 5 Operator Package.

2018

New Product Innovation

DCI continues to expand its dental offering with the introduction of a full cabinetry and orthodontic line.



Newberg, Oregon

The Pacific Northwest

DCI first opened its doors in Newberg, Oregon, the heart of dental equipment manufacturing in America. Over 350 employees are part of the DCI family which has proudly served the dental industry over 35 years.



Reliable Inside & Out

DCI is the largest manufacturer of dental parts in the world. We supply most equipment manufacturers in the market with delivery system parts – the parts that actually make your unit work, the “engine” of your dental system.

Most likely, you’ve been using DCI parts for years without even knowing it. From foot controls to control blocks, vacuum valves to quick disconnects, tubing to flow control valves, there’s a good chance DCI is inside the units you’ve grown accustomed to over the years.



Charlotte, North Carolina

East Coast Expansion

In 2018, DCI opened an additional 40,000 sq ft cabinet manufacturing facility. Equipped with state of the art CNC Machinery, DCI manufactures cabinets on both coasts.

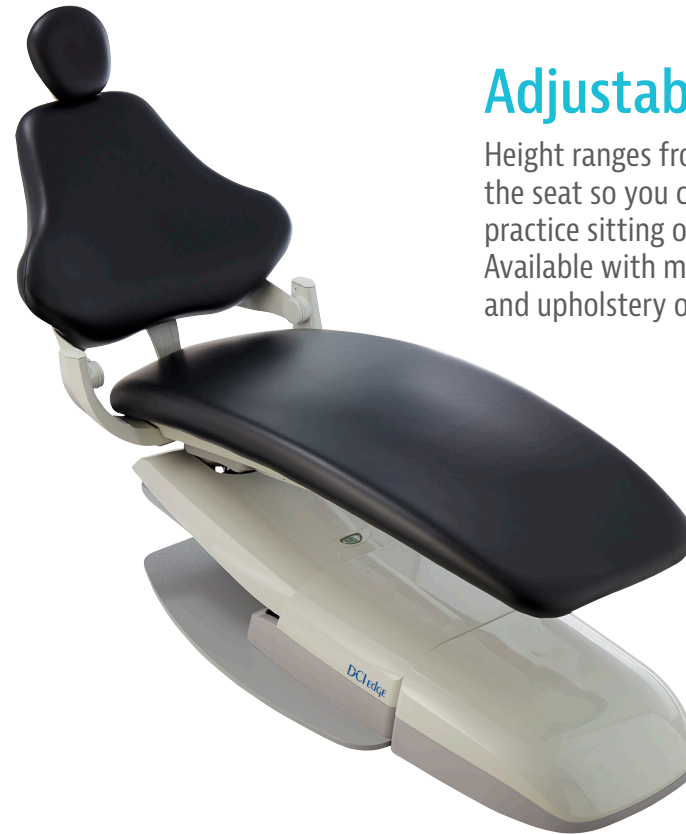
ORTHO CHAIRS



Shown with ponytail headrest

Fixed Base

Equipped with a solid steel base to ensure maximum stability. The Integrated foot control makes positioning your patients quick and easy.



Shown with dual articulating headrest

Adjustable Base

Height ranges from 16" to 31" at the seat so you can comfortably practice sitting or standing. Available with multiple backrest and upholstery options.

Additional Headrest Options



V Headrest



Fixed Headrest



Fixed and Adjustable Chairs are
available with optional armrests



ORTHO CABINETS

Quality Construction

Structural steel sub base on fixed cabinets. Heavy duty casters on mobile cabinets. 1mm Fusion edgebanding on all.

Advanced Features

Soft close doors and drawers.
Multiple configurations available.
Premium laminate and solid surface countertop options.



Mobile Ortho Cabinet



Fixed Base



Narrow Fixed Base



Narrow Mobile

INTEGRATION, SEAMLESSLY DESIGNED

Delivery Module

High quality components
for precision and speed.



CPU Package

Computer module-flat screen monitor mount includes CPU cooling fan.



*monitor not included



Quick Disconnect Panel

Simple & clean installation when adding accessories.



Recessed Countertop Groove

Prevents orthodontic bands and brackets from rolling off.



Glove Dispenser

Integrated glove dispenser to reduce clutter.



Integrated Trash Receptacle

Easy access for quick and efficient clean up.

REFLECTIVE TECHNOLOGY



No-Cure



Intensity



On/Off

Durable Design

Die-cast construction for solid performance.



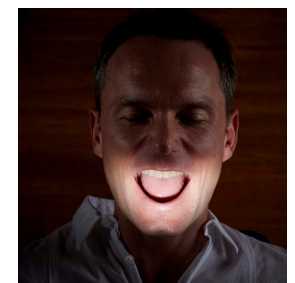
No-Touch Sensors

Control the light without contact using programmable no-touch sensors.



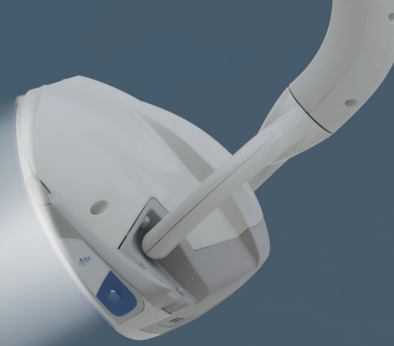
No-Cure Setting

Filters out UV light to prolong the working time of photo-initiated resins.



Less Eye Fatigue/ Increased Visibility

Optimal light performance reduces shadows, improving illumination of the oral cavity.

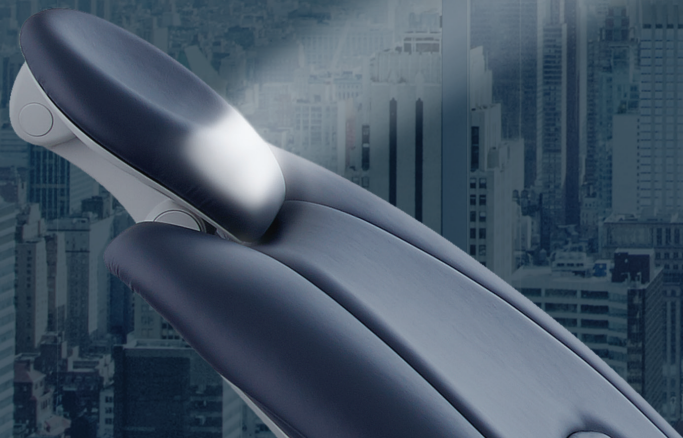


Accurate Shade Matching

5000 Kelvin color temperature with a color rendering index (CRI) of 90 produces a neutral white light, which is ideal for color matching at any intensity level.

Uniform Light Pattern

DCI delivers cutting edge illumination technology by utilizing over 500 reflective facets to bounce light back to the oral cavity. The result is a uniform light pattern that increases visibility for doctors and dental assistants.



Track Mount Light
*Cabinet mount also available



Post Mount Light



Ceiling Mount Light



Wall Mount Light

Find the Perfect Color

Over 85 designer choices

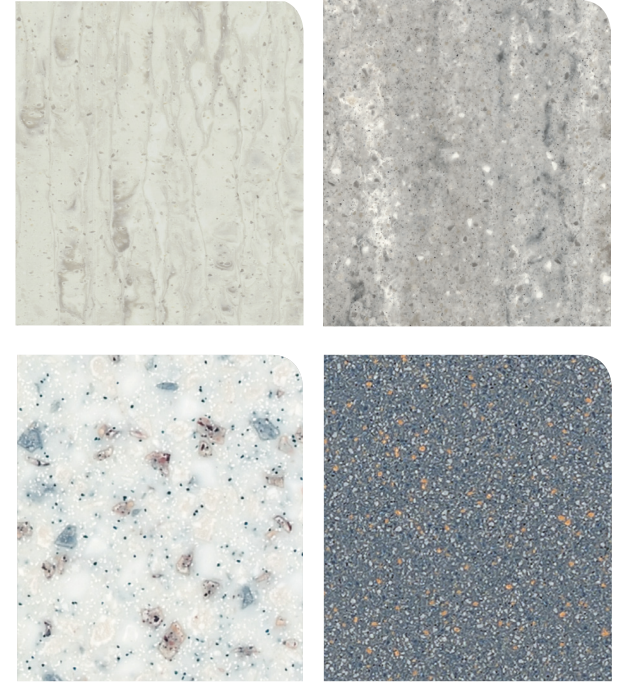
Upholstery



Premium Laminates



Solid Surface



For our full color selection, visit us at
www.dciedge.com

